

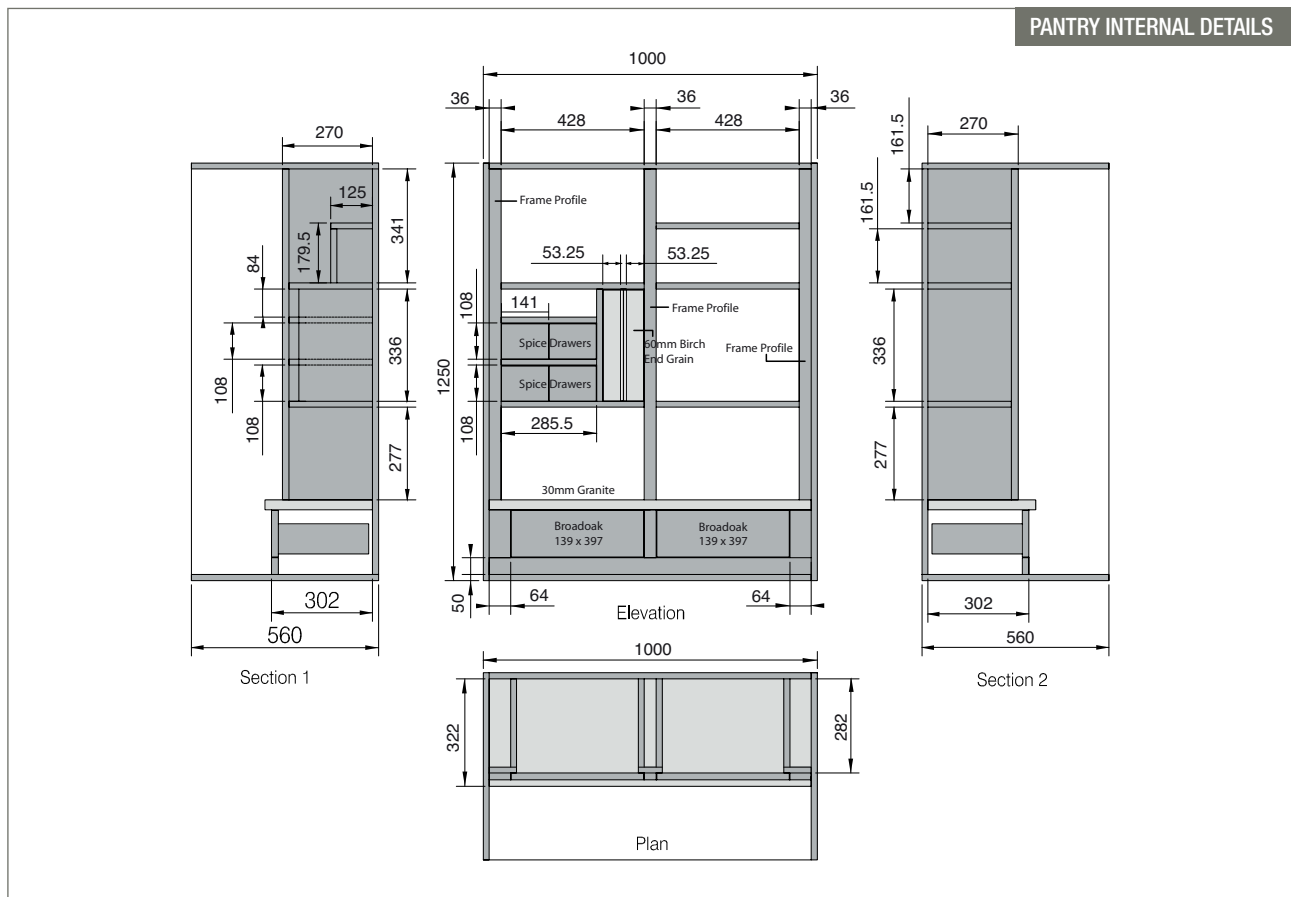
1909 IN-FRAME SHAKER CHEF'S PANTRY

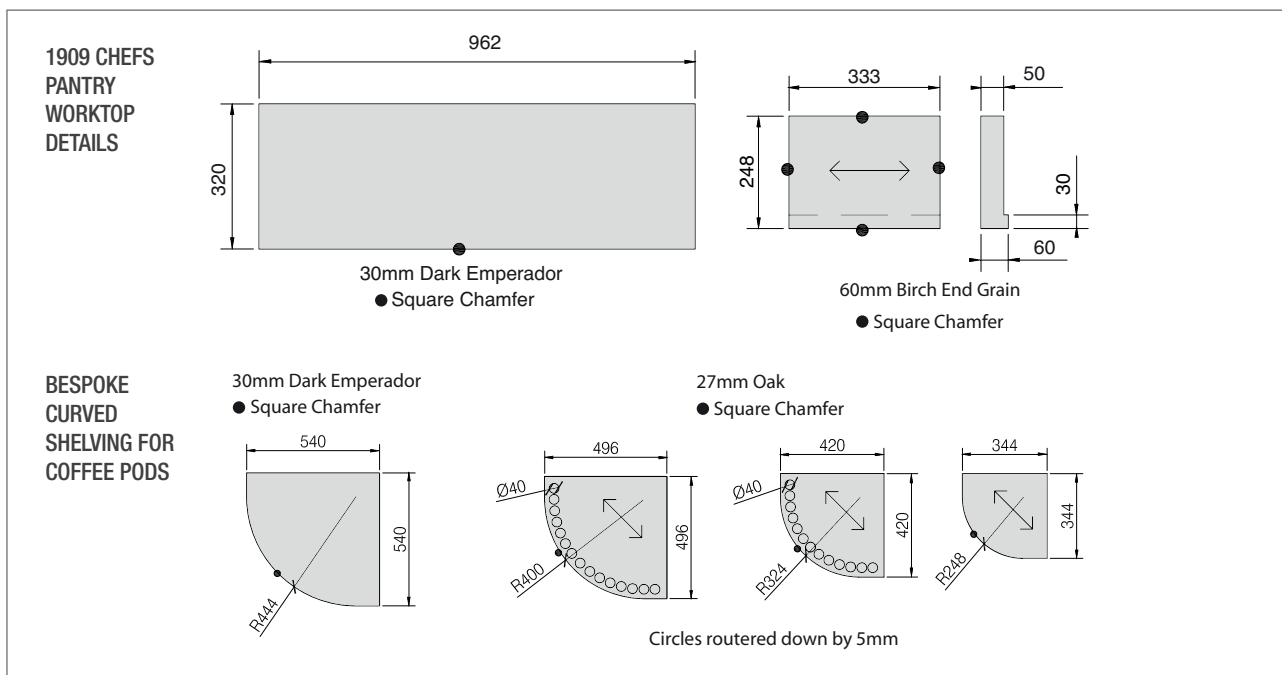
You can create the 1909 In-Frame Shaker Chef's Pantry by ordering the following components.

(Shown painted in Flint Grey)

For painted product, please order using prefix S9.

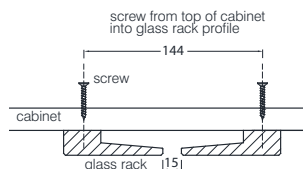
2 x	2 Door Dresser curved door set	(CDS 1210 x 560)
1 x	Pantry door set	(DSP 1210 x 1000)
2 x	2 Door Base curved door	(CDS770 x 560)
2 x	Base drawer line door set (for use with trays)	(TS770 x 200)
1 x	Base drawer line door set	(DLS770x600)
1 x	Cornice	(C30)
2 x	Curved Cornice for 560 x 560 cabinet	(CCS560)
1 x	Cornice build up section	(CB30)
2 x	Curved Cornice build up section for 560 X 560 cabinet	(CCSB560)
1 x	Contemporary moulded plinth	(MP30CT)
2 x	Curved moulded plinth for 560 x 560 cabinet	(CPS560MCT)
1 x	Under worktop unit bead	(BCC30)
2 x	Curved under worktop bead	(CBUW300L)
1 x	Sliding Larder train for 100mm cabinet	(SLT1000)
1 x	Broadoak Natural drawer front	(BN139x447)
4 x	Broadoak Natural spice drawer	(139x163)
1 x	Butlers pantry rack	(DRBP)
3 x	Broadoak Frame Profile	(BNFP1500)





Glass Rack

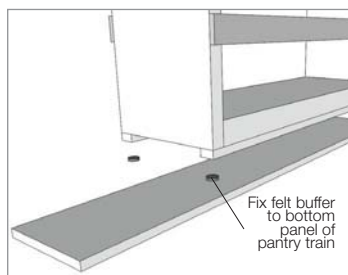
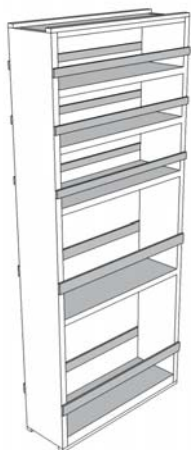
The glass rack is made from solid oak and can be cut down to suit the depth of the unit. It is supplied as a 560mm long profile you will require two lengths to hold a glass.



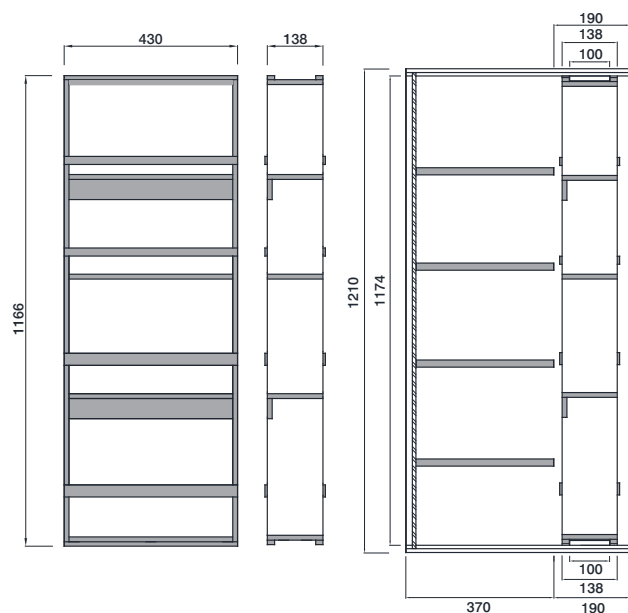
It is recommended to leave a 15mm distance, however this can be altered to suit.

Pantry train

The pantry train is designed for use inside a 1000mm pantry allowing easy access to smaller items stored in the train and when moved across the cabinet, allows easy access to the rear of the pantry.



The train slides on a base panel fixed to the bottom of the pantry



NOTE: 190mm depth of clearance is required internally when installing a pantry train.